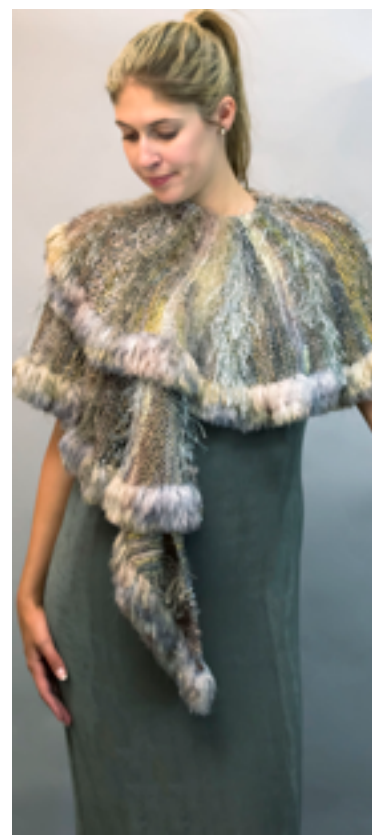


PRISM Book 82 ACCENTUATE!



8201: Swing Wrap! Worked in Stuff and Plume, our Swing Wrap adds drama and fun to any day. Sizing is determined through gauge: a smaller needle makes a more petite wrap, right in Denali. Slightly more open gauge gives lots of drape and drama in Conifer, left. **2 1/2 skeins Stuff; 5 Plume**



8202 Eccentric Chevrons

What a wonderful way to play with color, and with each row being tied & cut for fringe, no pesky ends to bury. The off-balance chevron (one leg is longer than the other) creates a slight dip in the back, so the wrap fits firmly on your shoulders. Make one in every color!

6 Merino Mia; color shown Harvest





8202 Eccentric Chevrons

Versions B & C

Petite Madison, left, works up in an A, B, C stripe pattern that lets you blend colors with no fringe and few ends to bury.

3 Petite Madison in Embers, Juniper & Violetta

Symphony, right, is also worked with A, B, C stripes, throwing in an occasional two rows of garter stitch for emphasis. A stockinette based pattern allows for cleaner, less blended stripes.

Symphony

3 Yosemite A

3 Blue Lagoon B

5 Slate C

1 Raspberry D



8203 Arctic Dreams Cowl

Lush cropped Plumette is the perfect choice for a luxurious faux-fur cowl. We chose 5 related shades for extra drama, but it would be fantastic in one color. Symphony adds structure and encourages the sections to roll.



We designed it to be loose enough to pull down over your shoulders for a extra warmth.

5 Plumette & 1 Symphony





8204 Stripe it up!

Here's a very fun, quick cowl: simply work a big bias strip in garter, using the Plumette to accent the Stuff, give it a half twist and graft the ends invisibly for a mobius that is long enough to wear down or double around your neck.

1 Half Skein Stuff Maui

2 Plumette Moss

8206 Big Chenille Scarves

Stitch up these comfy, soft scarves in a couple of nights. Thick Big Chenille knits at a large gauge on #10 needles (the smaller needle keeps the chenille from worming).



Fibonacci numbers shade Avocado to Mustard, left, while a wider piece in Conifer functions as a wrap, right.

2 Big Chenille



PRISM Book 82 ACCENTUATE!



8205 Brilliance Cowls

What a great way to get a quick accent piece for any occasion!

Our suite of cowls center around a single skein of Stuff—any style you like! A long, loosely knitted tube of texture & color pools softly around your neck, but has an elastic bottom edge that allows you to pull it down over your shoulders.

Clockwise from above left:

1 Playa Cool Stuff

2 Meadow Impressions

(makes a much thicker cowl)

1 Autumn Wild Stuff

1 Lipstick Wild Stuff

1 Woodlands Wild Stuff plus

1 Gossamer Blue Lagoon

(also a thicker cowl)

